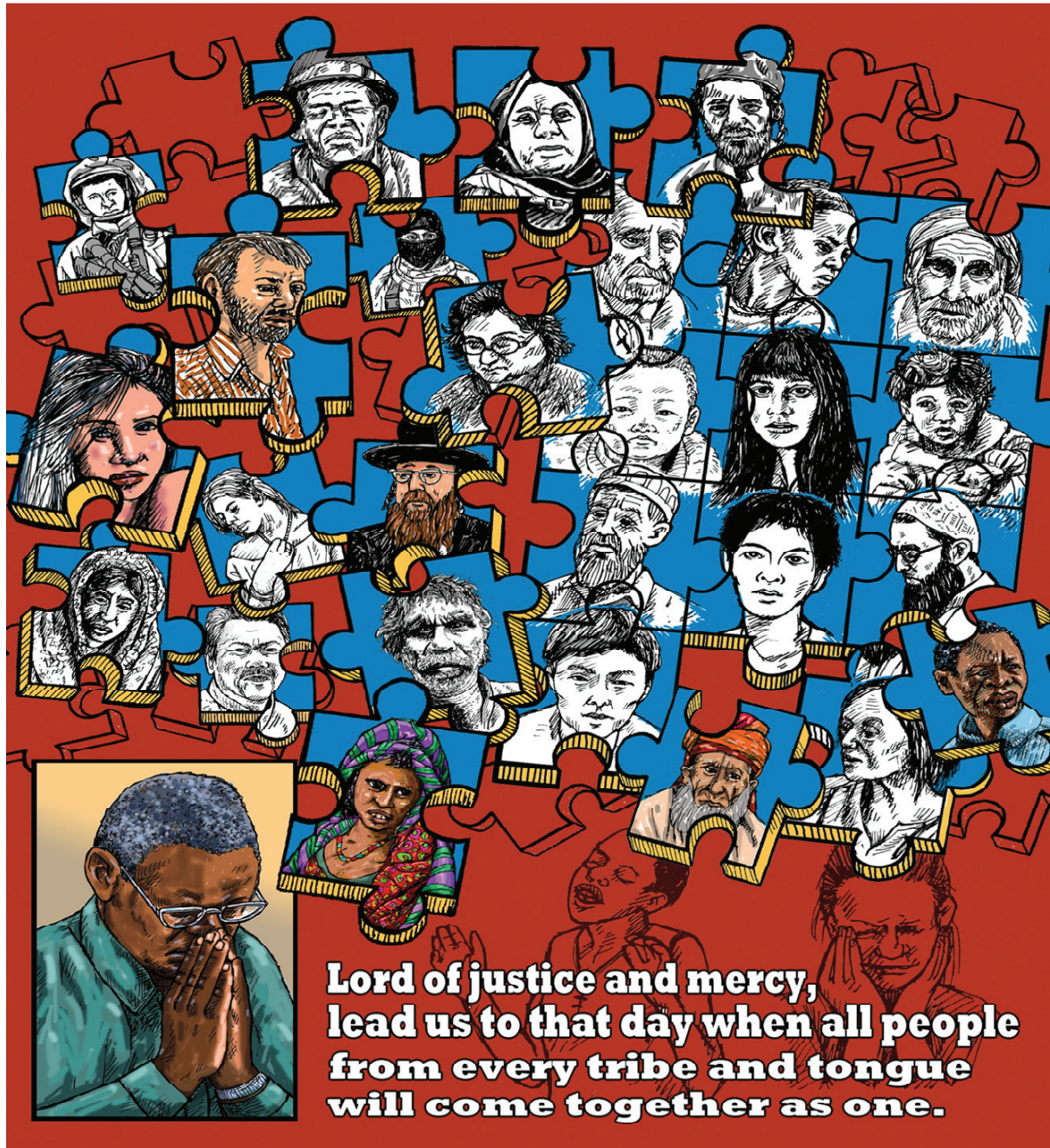


Connections



Ashbourne Methodist Circuit
Magazine November 2019

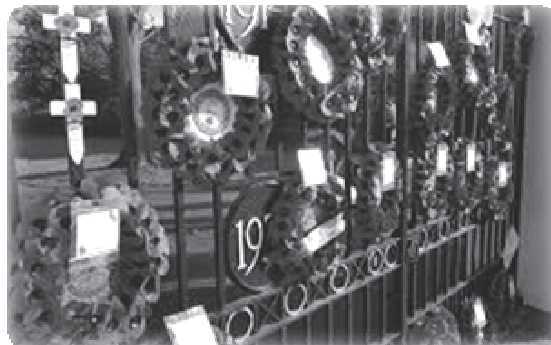
Letter from the Minister

The Manse, 16 Booth Drive
Ashbourne, Derbyshire DE6 1SZ
Tel: 01335 342408
email: tim.morris@methodist.org.uk

Dear Friends,

“Backwards and forwards”

The clocks have gone back, the curtains are “pulled on” and the nights are drawing in. Now we enter that time of remembrance – of looking back, of thinking of loved ones of old, of summers long gone, of happy memories, of time spent with family and friends and much more.



Yet remembering is more than just about personal memories.

Remembrance is a time for reflecting on our shared consciousness as a nation and as members of the human family. Time marches on and there is a greater distance between the events of the world wars and our lives today. But of course we are reminded daily of the cost still being paid by those serving (whether we like it, or not) in our armed forces. Any trip to the National Memorial Arboretum at Alrewas will bring home the stark facts of the very real price paid now. Names are constantly being added to the Memorial.

Remembrance Sunday, though not easy for any of us, needs to be an occasion to remember in some way, shape, or form, the cost, sacrifice, bravery, poignancy and legacy of many people – some from our own families perhaps, and sharing with our local community in marking the occasion with many around our nation.

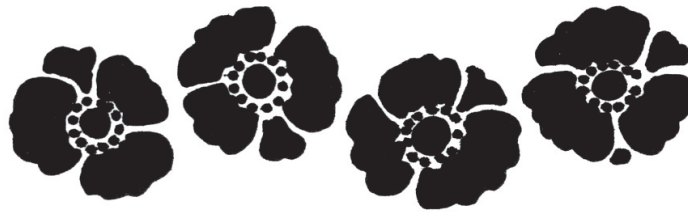
We remember the cost of war in human terms and give thanks for the lives of those who died, were injured, or bereaved and for the freedoms we enjoy today. But we also need to remember to strive for the peace we so desperately seek.

Our season of remembrance, of looking back, will then lead us to begin to look forward during the season of Advent, of the longing and waiting for the coming of Christ. How we mark our endings and beginnings are deeply spiritual matters. As a church we shall remember them in praise and thanksgiving, joy and wonder – all with the knowledge that Jesus Christ is the same: yesterday, today and forever.

So at this time of remembrance, of beginnings and endings, may God grant us His peace – the peace that passes all understanding.

Your minister and friend,

Tim Tomis



The inquisitive mind of a child

Why are they selling poppies Mummy?
Selling poppies in town today?
The poppies, child, are flowers of love
For the men who marched away.

But, why have they chosen a poppy, Mummy?
Why not a beautiful rose?
Because my child, men fought and died
In the fields where the poppies grow.

But, why are the poppies so red, Mummy?
Why are the poppies so red?
Red is the colour of blood, my child
The blood our soldiers shed.

The heart of the poppy is so black, Mummy
Why does it have to be black?
Black my child, is the symbol of grief
For the men who never came back.

But, why Mummy are you crying so?
Your tears are giving you pain.
My tears are my fears for you, my child,
For the world is FORGETTING AGAIN.

*Submitted by Margaret Cox (some time ago),
author unknown*

Ashbourne Church Family News

“It is good to praise the Lord and make music to your name, O Most High...” Psalm 92 v1

Our thoughts and prayers are with Don Cox, family and friends, following the death of Margaret on 20th October, also with David Heaton and family and with Judith Hall and her family on the death of their sisters.

We pray for those who are not well and for those who care; Betty Hadley, Sally Wall, Barrie Orme, David Franklin, Barbara and David Hollands, Sheila Cook, Mary Murphy, Jenny Waring, Alison Coe, Mary Phillipson. Let's keep in mind those we know who are waiting for tests, results and appointments. At the time of writing, Betty Hadley is in Meadow View Care Home, Matlock for the time being.

Keep praying for those you know who need prayer and are not mentioned here. I hear from many how grateful they are for the kind acts done for them whether it be transport, shopping, visiting, ringing or having a card drop through the letterbox. It is an expression of us being a part of God's family. Thank you to those who keep me in touch with needs of others in the fellowship. If you inform their pastoral visitor or housegroup leader, then visits can be arranged.

Congratulations to Edward Haslam (son of Paul and Wendy) and Heather Rimmer who were married on 5th October, and to James Marsh (Jacqui and Ian's son) and Bethan Jones who were married on the same day. Congratulations to Jackie Land who celebrates her 90th birthday on 3 November and to Dennis and Gwen Foster who celebrate their 65th Wedding Anniversary on 27 November.

Over the last few months, we have been glad to welcome to church Olga Robinson, John Wilcox, Mike and Gill Bell, Joyce and Stephen Wood, Steve Woodroffe, Jackie and Sarah.

Let's remember those who have now moved to live in Residential Homes: Nerida Maddock at Matlock, Barbara Blenkinsop at The Leys, Pearl Steeples at Uttoxeter and Dorothy Critchlow at Dove House. These people have been in the church for many years and so many of you will have memories of them. If you would like contact details to visit or send a card, please ask me.

Don't forget the prayer time in the vestry on a Thursday at 9.30am for an hour but just drop in for a shorter time if that suits you. After worship on a Sunday, there are people available to pray with you or for you.

Pray for Ruth Barratt, Chaplain to Businesses in Ashbourne and for Elizabeth Spencer, part of the Chaplaincy team at the Royal Derby Hospital. If you are in hospital and need a visit, you or a friend could let her know on 348482. Elizabeth is also a visitor at St Oswald's Hospital in Ashbourne.

Joyce Odell, Pastoral Secretary, 20.10.19



Methodist Women in Britain

Supper Evening – Wednesday 6th November

Our next Supper Evening will be held in the Century Hall on Wednesday 6th November at 7.00 pm. The menu will be baked potatoes with various fillings and salad, followed by apple crumble and custard. Tickets priced at £5.00 are now available from Alma (347586). Our after-dinner speaker will be the Rev Ann Anderson of the Borders Mission Circuit. She will be speaking about the project at Grassmoor. It is truly inspirational what has happened there – don't miss it!

Advent Displays – Thursday 28th November onwards

We shall again be displaying advent scenes and decorating the Church from Thursday 28th November. The theme this year is: 'We are going on a Journey..' Nursery and Reception Children from the local schools and nurseries will be coming to look round, have story time, activities and refreshments. The church will be open during the day and it will be well worth coming in for a look round, a sit and contemplation. Again – don't miss it!

Alma Swan

Shoe Box news and dates:

Please support the work of Shoe Boxes to provide gifts with love for children at Christmas:

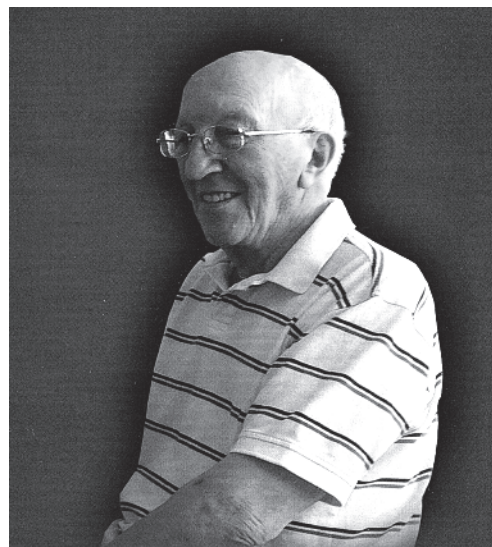
- Sunday morning stall after the Sunday morning service at Ashbourne on 3rd November for selling all goods suitable for the Shoe Boxes.
- No toothpaste or sweets in the boxes, please
- Shoe Box blessing service on Sunday 17th November at 10.30am.

For more details please speak to *Chris Dakin* (345280) or the Shoe Box team

Geoff Sheriff – a tribute

As we remember, inevitably we think not only of Geoff, but of Geoff and Eileen, for they were a team.

Geoff was born in Sheffield on 3rd October 1935. Whereas Eileen had lots of brothers and sisters, Geoff was an only child. Eileen would also say that Geoff grew up in the posh bit of Woodland View, Sheffield. He attended High Stores Boys Grammar School – Eileen went to the Girls Grammar.



From the Grammar School, Geoff got a place at Sheffield University, where he studied engineering and obtained his degree. He did an internship in Sheffield, then obtained a job at Rolls Royce and moved to Derby. In his younger days he enjoyed tennis and cricket.

Eileen and Geoff met at a dance, and they were married on 25th July 1959 at Woodland View Methodist Church, Stannington. Their first home together was in Mickleover, with Geoff working for Rolls Royce and Eileen teaching at Pear Tree Junior School.

Hoping for a family of their own, they fostered children, adopted Craig, and sometime later Emma was born. Following a move to Littleover, Geoff and Eileen came to Hulland in 1969. For many years, they were committed and active members of the Hulland Methodist Chapel.

Once the children were settled at school, Eileen went back teaching on supply at various village schools, eventually getting a permanent position at Kniveton, before being asked to go to St Chad's off Normanton Road in Derby, a multicultural school, eventually becoming deputy head in the early 1980's.

Meanwhile, Geoff's career took off with Rolls Royce, and work took him to RAF Cranfield, and overseas to Singapore, Seattle and Vietnam. He worked on the development of the Chinook helicopter, and aeroplane engine control and fuel systems.

Geoff was a quiet, well turned out man, dapper, courteous and kind. He was quiet, thoughtful, eclectic, and helpful. Geoff enjoyed finding the detail in things, how they worked, why they worked, and tried to put things right if they didn't work.

He was really very bright, but sometimes could display very little common sense. He never put anything away in the correct place, and was a hoarder. What lies under the remains of the garden shed is anyone's guess!

As well as being a hoarder, Geoff was what we might call frugal or, as Emma has termed, repurposing. He had maps - lots of maps, a map for everywhere, but they weren't necessary up to date, because Geoff, ever resourceful, repurposed the maps and drew in the new additional roads on to them.

Geoff and Eileen enjoyed the theatre, and had family holidays in Spain, Tenerife and Majorca. They also had a family touring caravan, which Eileen loved, but Geoff hated it, especially while trying to reverse the thing when hitched to the back of the car. However it took them to Cornwall, Wales, Kent and the Lake District. Then followed holidays to Egypt, the USA, Boston and New England, New Zealand, Australia, Italy, and Madeira.

The family grew with Craig and Emma's partners, Rebecca and Marcus, and grandchildren Cameron, Chloe and Charles.

Geoff enjoyed his dancing, and studied the steps really carefully. He and Eileen loved going out to Auckland, New Zealand, to see Emma and family. He served for many years as property steward at the Hlland Chapel, and enjoyed the friendship and discussions of the Bible study group.

Following Eileen's death on 29th November 2016, Geoff made annual visits to New Zealand and enjoyed walking the dogs, visiting cafes, and enjoying the life there. He came out of his shell a bit, he baked cakes and bread, won prizes at the Hlland Show, winning even just this last August. He grew his own vegetables, especially tomatoes.

He was determined to continue offering hospitality for the Bible study group, always making two cakes in case one didn't turn out well - but they always did!

Geoff died unexpectedly at home on 4th September 2019.

We give thanks for a true Christian gentleman, who served God's church faithfully and well.

Based on information from family and friends

REFLECTIONS

It seems appropriate to dwell on Remembrance again, as we head into November. Certain memories always come to mind at this time, some of distant years, some of more recent times.



I remember, when I was around 12 or 13, going to Belgium on holiday with the school. We were based in Ostend, but had day trips here and there: one to Middelburg, in the Netherlands, another day to Dunkirk. Whilst in the area behind Dunkirk, we got off our bus and walked round a hedge. There in front of us, as far as we could see, laid out in perfect symmetry, were war graves. Young as we then were, we were all taken aback at that scene.

Later in the day, we went into an area of World War One trenches, and, with a teacher in hand, went through a short tunnel. The smell of that tunnel will be forever with me. I cannot describe what it was. As you know, some smells remind one of something or someone - honeysuckle in our hedgerow, marzipan on the cake at Christmas are two that come to mind. But the smell in that tunnel was nothing I have smelt before or since! That was in about 1962 or 1963. I cannot remember exactly which, but that scene, and the smell, are still with me in 2019.

A couple of years ago, I visited Cannock Chase to visit the war graves there, just by the A34 Stafford to Cannock road, near a place called Brocton. It is about the size of a tennis court, but is still a poignant image of lives lost. But follow the road down into the Chase from that cemetery, and you will find the site of the German War Cemetery, where 5,000 Germans, Austrians, and a few Ukrainians lie.

In 1959, an agreement was put in place between Britain and Germany, whereby all German Forces' remains would be interred in one place. Cannock Chase was chosen, and there these soldiers, airmen etc lie. They are buried together, in ones, if a single casualty, or as a crew of an aircraft or a Zeppelin.

The common denominator, when I looked at these graves, both ours and our one-time enemy, is that they were someone's son, brother, father or relative, and how young they were, and really most importantly that we must continue to remember and "Never Forget", so that no other sons, daughters, fathers, brothers or any relatives rest in foreign fields due to our own human folly!

Tom Parkinson

CHRISTMAS CONCERT ST AGNES FOUNTAIN

Ashbourne Methodist Church
Monday 2 December 7.30pm

TICKETS £20 from:

John Barker 01335 300728 or

12345jfbarker@gmail.com ;

Eric & Jenny Williams 346155

www.derbylive.co.uk

(£21.25 incl. card fee)



Proceeds to the Link Development Fund

St Agnes Fountain have been touring their wonderful, nightly Christmas concerts in December around the country, since the millennium, to delighted audiences in churches, community halls, theatres and arts centres. They perform in a wide variety of musical styles and their programmes of carols and Christmas songs appeal to a wide range of musical tastes www.stagnesfountain.co.uk Videos at: www.youtube.com

Chris Leslie is a multi-instrumentalist and singer-songwriter, primarily known for his work with the top folk group: Fairport Convention. Chris has provided music for a number of Radio Four plays, classic serials, and several TV series. He plays: fiddle, mandolin, tenor guitar, bouzouki, ukulele, banjo, oud, whistle and Native American flute.

www.fairportconvention.com www.chrislesliemusic.co.uk

Chris While (vocals, guitar, bodhran, darbuka and percussion) and Julie Matthews (vocals, piano, guitar, accordion and gazouki) have been nominated ten times in the BBC Radio 2 Folk music awards in the 'best song, best duo, best live act' categories and winning best duo in 2009. This year they celebrated 25 years as a duo and last year toured the groundbreaking 'Ballads Of Child Migration Live' a project that covers the sad history of forced child migration. www.whileandmatthews.com

David Hughes is an acoustic guitarist, songwriter, author and playwright. His sharp, half-spoken delivery and rhythmically-percussive finger-style guitar earned him regular slots on BBC Radio Four's Loose Ends with the late Ned Sherrin. In 2001, David was the founder member of the St Agnes Fountain project. The band recorded an album of Christmas music and now tours to sell-out audiences each December since, with eight further albums. www.davidhughesmusic.co.uk

Ruth on Retreat

Early in October I attended the Every Woman retreat at Cliff College. Our study and focus was the book of Ruth. So no-one had trouble remembering my name!

This was a really thoughtfully put together short course, well led with collaboration between Girls Brigade Ministries and Cliff College. We were a mixed age group of 20 women from different locations with mainly Methodist and/or Girls Brigade backgrounds.

Reflecting on my Retreat weekend, I can say it has been a valuable time and a real privilege to be in a beautiful, inspiring and comfortable place to learn, pray and participate. Having a breathing space was so helpful to reflect on life, listen and seek God's guidance. So I just wanted to share some insights in case taking some time out from your day to day life would be beneficial too.

Using the amazing Bible story of Ruth in many mediums, we shared a fresh look at this story through guided reflections, discussion, worship, prayer, film and creative activities. Ruth was strong, resourceful, noble in character, selfless and hard working. She found favour through faithfulness and we see beauty revealed through brokenness. Wow! We were reminded that sometimes we can encounter the unexpected when life can leave us feeling empty handed. This Retreat gave opportunities to reflect on how we respond to difficult times. What it feels like to weather the storm and where we see God in our circumstances.

Our sessions opened with "What's in your hands" – looking at what we might need to let go of as began the weekend. The first session was entitled "Journeying On" – considering the journeys of Ruth and Naomi as well as our own journey with God.

This was followed by "Encountering Jesus" – exploring messianic glimpses in the book of Ruth (something I had never considered before) and where we see Jesus in our own life.

Session 3 was "Giving everything" – the risk Ruth took and examples of women who have given everything to follow Jesus e.g. Amy Carmichael. "Embracing all" was the session for the end of the story. Understanding that God's grace is for everyone and what that means in our life and the world today. This was followed by "You can't go back empty handed" – pulling the threads of the weekend together and sharing how God has filled us in this time on Retreat.

Alongside the exploration of an amazing woman in the Bible, the weekend enabled time to connect with others, walk, relax and appreciate the wonderful location. I realise that investing in “time out” for a Retreat with focus can really equip an individual in their Christian life and service – reflecting back, being in the present and seeking or clarifying things for the future. I hope you can create this sort of opportunity for reflection whether it is on your own doorstep or further afield.

Of course, I did return to heaps of washing and all things domestic and work-wise, and some benefits do evaporate fast, but it was an extremely worthwhile time!

Ruth Mallard

Idea for Christmas presents!

“From Kniveton to Kenya”

The thrilling life-story of Sister Merle Wilde, a much loved personality in the Ashbourne Methodist Circuit, who died in November 2017.

In September 1952, in Kniveton Chapel, Merle was called to faith. Before long she was also called to become a preacher and to serve God in Kenya.

Subsequently she also served in Notting Hill, Bristol and Coventry, before returning to this Circuit where she continued to serve for another 36 years.

Copies still available from Ashbourne Methodist Church (ask a steward), or in Cornerstone, or contact John or Daphne Dyster 01335 344086 Price £4.00 - All proceeds to the Methodist Church World Mission Fund



From Kniveton to Kenya



Sister Merle Wilde

Synod Report - Lots of Questions

I attended the District Synod for the first time in September. The Autumn synod is for the District to report to Circuits, and the Spring synod is the opposite. The huge hall at Derby Community Church Riverside Centre held a large gathering of Methodists and a range of 'market place' stalls of information, resources and goods.

The theme was "Doing things differently – New places for new people". After business issues, the District Chair and Past President of Conference, Rev Loraine Mellor, gave a rousing but challenging speech calling us to mission. The challenge was illustrated by asking us all to stand up and then asking age groups to sit down. Only the less observant were surprised that the younger adult group who were left were just a few. Nevertheless, the stark point that our Circuits and District are predominantly run by pre- and post-retirement members, reflecting similar church memberships, was clear. As Loraine put it – who was going to be running things in future decades? We needed to find successors.

Groups from Circuits were then asked to discuss questions which local churches could also usefully do:

- In your church/community who do you have contact with, and who do you want to connect with?
- How do you make contact with the people who use your church buildings? What hospitality do you offer to them?
- How do you find out who the new people are around your church, your home?
- How as a church are you making new disciples?
- What are you going to give up at your church in order to engage with New Places for New People?
- If this conversation has inspired you to think about a new venture in your circuit/church what would it be?

After our packed lunches, we had a talk from Tim Baker of All We Can (formerly the Methodist Relief & Development Fund) and watched the inspiring video about the people and potato farming in Cherkos, Ethiopia which was also shown at Ashbourne's recent Harvest Festival.

www.allwecan.org.uk/resources/service-materials/harvest-2019-deepen-your-roots

In the Conference Report, we saw a video about the Task Group team who prepared the 'God in Love Unites Us' report concerning marriage and relationships. This report sets out the group's Findings and Recommendations and ends with the Resolutions of Conference. We are asked to study and arrange prayerful discussion of the report in our circuits to inform synod representatives for the spring meeting next year, prior to Conference 2020 when decisions will be made.

The report provides consideration and guidance of all types of committed loving adult relationships covering cohabitation, civil partnerships, marriage and divorce as well as proposing that same-sex marriage be possible in the Methodist Church. It recommends there be respect for differing convictions and protection for those who officiate at marriages to act according to conscience.

John Barker, Circuit Steward

The Cornerstone Coffee Shop

There have been some changes within the management team. This is a time to review and consider prayerfully how we fulfil our various roles and whether we are performing them efficiently and effectively. Helen Flinn has retired after many years' involvement with the Coffee Shop and we thank her for her vision and all that she has contributed. Elizabeth Hurfurt is giving up the chair. Various people are taking over Helen's baking duties and Rae Alton will be looking after cards. Eric Williams will be our new chair.

Following our last health and hygiene inspection a new cleaning schedule has been necessary. We are looking for volunteers to help with that on a Wednesday afternoon and also someone to co-ordinate that work. We have new volunteers for washing tablecloths and aprons.

The Coffee Shop is now participating in the Safer Space scheme as part of the county campaign. We have decided to stop selling bottled water but we will provide tap water free of charge and also refill customers bottles if asked.

We also feel that we would benefit from a manager who would oversee our operations and who would have a vision for our future.

If you feel that you could help in any of these ways or would like to be part of our team please contact *Eric Williams (346155)*.

And of course if you could help in the Coffee shop on Thursdays, Fridays or Saturdays then please contact *Pat Fielding (345695)*.

MISSION MATTERS



Alan Griggs, who took our Harvest Service recently, is the Lead Agricultural Chaplain in Derbyshire. The Derbyshire Agricultural Chaplaincy (DAC) is a project which has been managed and supported by Rural Action Derbyshire since 2003. The DAC project provides a Christian service to rural communities in Derbyshire and as such is worthy of our support in prayer and other ways. Alan is happy for us to do this. This article describes something of what they do. See also:

<https://www.ruralactionderbyshire.org.uk/Pages/Category/support-for-farming-community>

For items to pray about specifically, please see the new edition of Mission Matters for Prayer.

About Rural Action Derbyshire:

Established in 1924, Rural Action Derbyshire (formerly Derbyshire Rural Community Council) is an independent organisation and registered charity, operating across the county. RAD aims to improve the life of those living and working in Derbyshire. RAD is one of 38 rural community councils in England and is a member of ACRE - Action with Communities in Rural England.

The Vision for Rural Action Derbyshire:

We believe that no-one should be unfairly disadvantaged because they live in a rural area.

Despite its idyllic image, rural communities have pockets of isolation and deprivation, difficulties accessing services and a growing older population. Specialist services and the delivery of these services is being shaped around more populated, urban areas. Poor transport links reduce access to many of these vital services as well as to jobs and training.

The Aims of the Derbyshire Agricultural Chaplaincy:

- To offer pastoral action and spiritual support to people living and working in rural Derbyshire, particularly those working in the land-based sector
- To support and complement the rural church to express the love of God through Jesus Christ to all people
- To enable people to discover the presence of God in their daily work
- To celebrate rural life and the contribution of the land-based sector to Derbyshire
- To support and coordinate special acts of worship for and on behalf of the rural community

The Vision for Derbyshire Agricultural Chaplaincy:

Our vision is to provide pastoral action and spiritual support to the agricultural community in Derbyshire. The DRC is an ecumenical Christian organisation. It concentrates workplace support to the farming and rural sector throughout the County of Derbyshire. Chaplaincy is provided by ordained and lay people from authorising denominations, both Anglican and Methodist and other Christian traditions. Further support is provided by DRC volunteers from the farming and rural community collectively known as the Farmers' Support Team.

Richard Odell, World Mission Secretary
richard@richarddodell.co.uk

Christmas cards and gifts



**The Leprosy
Mission**
Home shopping

I will shortly have catalogues available from The Leprosy Mission, featuring a great range of Christmas cards with Bible verses, and gifts. The sales support Leprosy affected people around the world. We also receive commission which has raised over £350 for Ashbourne's Link Project. For more info, please call me on 01335 300338 or email stuart@greenofashbourne.plus.com

Stuart Green

Hope for the Countryside

A day of prayer for rural Britain

16 November 2019
10.00 am - 3.00 pm



Sutton St James,
Church Lane,
Sutton Lane Ends,
Macclesfield
SK11 0DS
(suttonstjames.weebly.com)

info@villagehope.org.uk
01432 850071

To book, visit
<https://hftccheshire.eventbrite.co.uk>
Alternatively, call or email as
above, by
29 October 2019

*A day of prayer for the churches
and communities of rural
Britain.*

Join us for a time of worship,
sharing, listening and praying for
all who live, worship, work or
serve in the countryside.

Our purpose will be to seek the
Lord for a fresh move of the
Holy Spirit across the
countryside of our nation.

Hot drinks and lunch will be
provided. There is no charge,
but there will be an offering to
cover costs.

*'Hope for the Countryside'
is a partnership between
Agricultural Christian
Fellowship, Village Hope,
World Prayer Centre and
Top Barn Trust. Our aim
is to mobilise and
resource prayer for rural
Britain, including through
regional prayer days and
a monthly 'Seeds of
Prayer' bulletin
(villagehope.org.uk/hftc)*

*This prayer day is being
run in partnership with
Arise Cheshire East.*



*Ruth Mallard will be going - if you would like a lift,
please contact her on 348342*

Christian Giving and Ashbourne Methodist Church

Why do we give?

Included in our “Plan for Growth” is the calling of the Methodist Church, “to respond to the Gospel of God's love in Christ and live out its discipleship in worship and mission”. Our response to God is summarised in 1 John 14 v.19 – “We love because he first loved us”. Similarly, we give to God because he first gave to us – everything we have comes from him.

How should we give?

Jesus expects us to give. In Matt 6 v. 2 Jesus says “When” you give, not “If”. At Ashbourne we don't take up a formal offertory as we want giving to be a free will offering, not done out of any sense of obligation. In Corinthians 9 v.7 Paul explains that we should also give cheerfully. “Each of you should give what you have decided in your heart to give, not reluctantly or under compulsion, for God loves a cheerful giver”.

How much should we give?

Jesus stresses the importance of being willing to give when he said to the young ruler “you still lack one thing, sell everything you have and give to the poor and you will have riches in heaven.” Jesus requires us to be generous and sacrificial in our giving. This passage challenges us to think about how important Jesus is to us, and how that importance is reflected in our giving. Ashbourne Methodist Church is blessed with many people who give very generously, but over the past Methodist year total giving has declined by over 5%.

	17/18	18/19
	£	£
Giving		
Direct to Bank (Standing Orders)	57,108	55,323
Collection boxes in Church	11,369	8,677
Tax reclaimed	15,245	15,445
Total	83,722	79,445

As we embark on our exciting and ambitious “Plan for Growth” there is a need for all of us to review our giving. Many, including myself, have not increased our giving for many years, and with cost inflation and our latest plans it would be good if we could all review our giving at this time.

How can I make changes to my giving?

As can be seen above, the vast majority of individual giving to the Church is now made by monthly standing order which is the easiest way to make regular payments. Setting up a standing order is straightforward and the Church bank details are as follows:-

Name of Account : Ashbourne Methodist Church
Sort Code : 16-12-15 Account Number: 11158631

If you would like to Gift Aid money to the Church, I can provide the necessary short form. Gift Aiding allows us to reclaim tax on your giving and adds a significant sum to our income as shown above.

If I can help in anyway please feel free to contact me.

Paul Haslam, Treasurer, Ashbourne Methodist Church (01335 345560)

Mustard programme: November 2019-January 2020

3rd Nov	6.30pm	Cornerstone	Belong session 4
9th Nov		Sleepover	Sleepover in Gateway on Saturday evening. More details to follow
17th Nov	6.30pm	Praise	Praise in the Century Hall,
24th Nov	6.30pm	Cornerstone	Belong session 5
1st Dec		Brailsford area	Safari meal around Brailsford area. More details to follow
8th Dec	6.30pm	Cornerstone	Belong session 6
15th Dec	6.30pm	Praise	Praise in the Century Hall
22nd Dec	6.30pm	Church	Carols by Candlelight followed by the Mustard Christmas Meal
29th Dec			No Meeting - school holidays
5th Jan	6.30pm	Cornerstone	Belong session 7
12th Jan	6.30pm	Cornerstone	Belong session 8
19th Jan	6.30pm	Praise	Praise in the Century Hall
26th Jan	6.30pm	Cornerstone	Belong session 9



*This is the confidence we have in approaching God:
that if we ask anything according to his will, he hears us.
1 John 5:14*

Date	Event	Contact
Tue 29 Oct 4 – 6pm	Ossie’s kitchen: Community Café for an intergenerational social eating experience. Three courses for £3/£1 St Oswald’s church centre	Nigel Rode 664159
Thu 7 Nov 7pm	Prayers United (ACT monthly prayer meeting) at Elim church, with communion	Di Lambert 661238
Fri 15 Nov 7.30pm	Evening Talk by John Bell (Iona Community) at The Maltings, Wirksworth. “Singing our way into or out of Belief.” Free but booking essential. There’ll be singing as well as listening.	Paulheppleston5@gmail.com
Tue 26 Nov 4 – 6pm	Ossie’s kitchen: Community café for an intergenerational social eating experience. Three courses for £3/£1 St Oswald’s church centre	Nigel Rode 664159

Approaching Advent Worship

Monday November 11th 7:30-9:30 in the Cornerstone

Do you preach or lead worship?

Join us for an evening of shared preparation for Advent 2019

- problems and possibilities
- the lectionary
- themes
- all age

Tea and coffee from 7:15 All welcome

For more information contact Fiona Green 01335 343011
onesmallflock@btinternet.com

Places are free to book, but do let us know you are coming so that we can provide materials for everyone.

From the Editors

We are grateful for all your contributions.

We would welcome items for the next edition, including photos of church activities – **December/January 2019 (combined edition)**

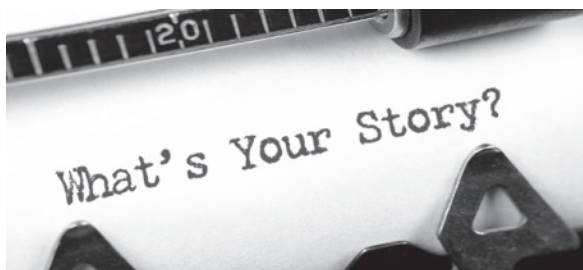
Please note we are unable to include items which are copyright, unless permission is obtained from the copyright-holder.

Last date for contributions: **Wednesday 13th November**

Publication date: **Sunday 24th November**

If possible, please e-mail us at dysters@tiscali.co.uk

If this is not convenient, please contact us on 01335 344086



In September *Connections*, Rev Tim Morris wrote about “moving stories”. Telling and hearing stories is a key way of expressing and exploring our faith.

We can all say something about God’s part in our life, and our stories can be told in many ways.

This magazine is one of the ways stories can be shared. We would like to receive more stories for future publication in *Connections*, such as:

- how you came to faith,
- a particular episode in your life when you felt near to God
- a recent experience
- how you were part of someone else’s faith journey.

It doesn’t have to be terribly long - ideally no more than two pages of the magazine (about one side of A4).

Like Tim, we look forward to reading your stories, and pray that through them we can all be encouraged to move on together, in our own lives and as a Christian community.

Daphne and John Dyster

Ashbourne Circuit Church Services

Sunday 3rd November

Ashbourne	10:30	Fiona Green	
	18:30	Praise – Sue Leese	in Century Hall
Brailsford	10:30	Lorraine Hawkins	United Service at Methodist
Parwich	14:30	Church of England	United Service

Sunday 10th November

Ashbourne	9:15	Café style	in Century Hall
	10:45	Tom Parkinson	
	18:30	Rev Tim Morris	Circuit Service Communion
Brailsford	10:30	Church of England	United Service
Kniveton	14:30	Ruth Barratt	

Remembrance

in Century Hall

Circuit Service
Communion
United Service

Sunday 17th November

Ashbourne	10:30	Tim Dutton/ Rev Tim Morris	All Age Shoebox service
	18:30	Praise – Robert Sales	in Century Hall
Brailsford	10:30	Diana Whitmill	All Age, Shoebox Service
Parwich	10:00	Church of England	United Service
Tissington	10:30	Steve Haines	

Sunday 24th November

Ashbourne	10:30	John Dyster/ Rev Tim Morris	Communion
	18:30	T Parkinson	
Brailsford	10:30	Peter Dawson	
Kirk Ireton	18:30	Rev Tim Morris	
Kniveton	11:00	Diana Whitmill	

Sunday 1st December

Ashbourne	10:30	Rev Mark Broadhurst	
	18:30	Praise – Peter Dawson	in Century Hall
Brailsford	10:30	Rev Tim Morris	United Service at Methodist, Communion
Parwich	14:30	Lorraine Hawkins	

Advent 1

The details in **Bold** are changes to the usual plan.

Dates for your diary and your prayers

November

Wed 6th	19:30	MWiB Supper in Century Hall
Wed 7th	19:00	ACT Prayers at Elim Pentecostal
Sun 10th	18:30	Local Preachers Recognition Service (see below)
Sat 16th	18:00	Board Games in Century Hall
Sun 17th	10:30	Ashbourne Shoebox service
Sun 17th	10:30	Brailsford Shoebox service
Mon 25th	19:30	Ashbourne Leadership Team meeting
Thu 28th		MWiB Advent Displays at Ashbourne
Sat 30th	19:00	Concert by Chameleon Choir at Ashbourne Church

December

Mon 2nd	19:30	St Agnes Fountain Concert at Ashbourne Church
Tue 3rd	9:15	Circuit Leadership Team meeting
Tue 3rd	19:30	Local Preachers meeting
Wed 4th	12:00	ACT Prayers
Fri 6th	18:00	Ashbourne Late Night Shopping
Fri 13th	19:00	Ashbourne Town Band in Ashbourne Church
Sat 14th	19:00	Ashbourne Singers Concert at Ashbourne Church
Tue 17th	12:30	Ashbourne Christmas Lunch
Sat 21st	10:00	Ashbourne Messy Church
Mon 23rd	18:00	Brailsford Carol Service
Tue 24th	16:00	Milldale Christmas Service
Tue 24th	11:30	Christmas Eve Communion at Ashbourne
Wed 25th	10:00	Christmas Day Family Service at Ashbourne

Recognition Service

On Sunday 10th November at 6.30pm, there will be a Circuit Service at Ashbourne which will include the recognition of Lorraine Hawkins as a fully accredited Local Preacher. Everyone welcome.

Ashbourne Church Activities

Sun	18.30pm	Mustard (Youth Fellowship)
Mon	10.00am	Housegroup: weekly <i>Contact – Gareth Rutledge (418519)</i>
	14.00pm	Craft and Chat in The Cornerstone <i>Contact – Clare Sales (342321)</i>
	19.30pm	Housegroup: weekly <i>Contact – Helen Walker (343910)</i>
Tues	9.00am	kids@cornerstone <i>Contact – Clare Sales (342321)</i>
	10.00am	Housegroup: weekly <i>Contact – Alma Swan (347586)</i>
	12.30pm	Luncheon Club: last Tuesday in month. Century Hall <i>Contact – John & Elizabeth Hurfurt (342859)</i>
	13.00pm	kids@cornerstone (not 3rd Tuesday of the month) <i>Contact – Clare Sales (342321)</i>
Wed	9.30am	Walk and Talk Group: weekly <i>Contacts – Chris and John Dakin (345280)</i>
	19.30pm	Housegroup: fortnightly <i>Contact – Eric and Jenny Williams (346155)</i>
Thu	9.30am	Prayer Meeting: weekly <i>Contact – Brian Hawkins (310353)</i>
	19.30pm	Housegroup: weekly <i>Contact – Jeff Ffoulkes(300443)</i>
	19.30pm	Housegroup: weekly <i>Contact Jo & Paul Taylor (342897)</i>
Fri	19.30pm	Housegroup: fortnightly <i>Contact: Catherine Green (300338)</i>
Thu, Fri, Sat	10.00am	The Cornerstone Coffee Shop <i>Contact – Pat Fielding (345695)</i>

Brailsford Church Activities

Tues	9.30am	Coffee Shop: weekly
Wed	12.30pm	Luncheon Club: monthly (2nd Wednesday)

Hulland Church Activities

Wed	19.30pm	Bible Study: monthly (1st Wednesday) <i>Contact – John Dyster (344086)</i>
Thurs	14.15pm	Women’s Fellowship (1st Thursday)

Tissington Church Activities

Fellowship Group
Contact – Richard Odell (419319)



**Jonathan with the Rt Revd Libby Lane, Bishop of Derby
at Derby Cathedral, 20th June 2019**