

# Connections



Ashbourne Methodist Circuit  
Magazine June 2019

## Letter from the Minister

The Manse, 16 Booth Drive  
Ashbourne, Derbyshire DE6 1SZ  
Tel: 01335 342408  
email: tim.morris@methodist.org.uk

Dear Friends,

**“...on earth as it is in heaven...”**

The former Archbishop of Canterbury, Dr Rowan Williams said: “If somebody said, ‘give me a summary of Christian faith on the back of an envelope’, the best thing to do would be to write the Lord's Prayer”.



The Lord's Prayer is not an easy prayer, nor a prayer that pretends. It is a prayer that requires our lives to change, that we become different sorts of people. And it is a prayer which acknowledges that will only happen when we learn how to depend freely and lovingly on the God who has made himself Our Father.

From Ascension to Pentecost, Christians are being encouraged to take part in deepening their relationship with Jesus Christ, to pray for God's spirit to work in the lives of those they know and to come to realise that every aspect of their life is the stuff of prayer. The initiative is called 'Thy Kingdom Come'. There are many resources to find on the website [www.thykingdomcome.global](http://www.thykingdomcome.global)

During 'Thy Kingdom Come' people commit to pray with God's world-wide family - as a church, individually, or as a family. Many churches are holding prayer events across the UK and in other parts of the world. The prayer is that people will be transformed through prayer by the Holy Spirit, finding new confidence to be witnesses for Jesus Christ. The invitation is simply for people to pray in whatever way they want, with whoever they want and wherever they can, that others might know Jesus Christ.

So I hope, and pray, that you will find time to join other Christians in praying the words of the Lord's Prayer, that his kingdom would come, on earth as it is in heaven. And in doing so, may you discover the transforming power of God for your own life.

Your minister and friend,

A handwritten signature in black ink that reads "Tim Morris". The signature is written in a cursive, slightly slanted style.

## **‘Being Real’**

‘Thy Kingdom Come’ is the global wave of prayer - calling all Christians to pray for evangelisation from Ascension to Pentecost (30 May - 9 June).

As part of ‘Thy Kingdom Come’, a District event ‘Being Real’ is taking place on Saturday 8th June, 1.00pm-5.30pm at Samworth Church Academy Mansfield, NG18 2DY. This will be an afternoon of worship, teaching, art, music, fellowship and prayer.

There is something for everyone starting with a picnic and entertainment, followed by worship and prayer. There will be “Ted Talks”, sports and games, prayer stations, crafts and seminars. See posters for more details.

*Transport can be arranged by contacting Carole Thorpe on [cethorpe@hotmail.com](mailto:cethorpe@hotmail.com) or 346535.*

## **Bible Month: 30 Days in Colossians**

Bible Month helps us engage more deeply with Scripture by focussing on a single book of the Bible over a calendar month – through Sunday worship, home groups and individual study.

This allows us to gain a greater sense of the importance of context, both literary and historical. It encourages us to explore how a book develops, to identify links between passages within the book, and to engage with the book as a whole.

For 2019, we focus on Colossians, a letter which presents a powerful vision of Jesus and his significance. At Ashbourne and at Brailsford, there will be a series of four morning services: based on Colossians:

<b>Passage</b>	<b>Ashbourne</b>	<b>Brailsford</b>	<b>Preacher</b>
1:1-23	26th May	2nd June	John Dyster
1:24 - 2:15	2nd June	9th June	Fiona Green
2:16 - 3:17	16th June	23rd June	Diana Whitmill
3:18 - 4:18	23rd June	30th June	Rev Mark Broadhurst

## **Ashbourne Church Family News**

*“For I am convinced that neither death nor life, neither angels nor demons, neither the present nor the future, nor any powers, neither height nor depth, nor anything else in all creation, will be able to separate us from the love of God that is in Christ Jesus our Lord.” Romans 8 v. 38-39*

Our love and prayers go to Pat Fielding and family on the death of her mother on 8th May. There are many who need our prayers who are waiting for tests or operations or for results, as well as those who have life limiting illnesses, those who are caring for others and those with personal and family issues; Stuart and Sigrid Mustow, Barbara and David Hollands, Margaret Cox, Richard Barratt, Val Rutledge, Peter Richards, David Franklin, Jenny Waring, Pearl Steeples and Hilary Smail.

Congratulations to Nick and Becca Dennison on the birth of Otilie Ann, a sister for Alfie and granddaughter for Mike and Cherry Dennison, and to Heidi and Tim Wijsbroek on the birth of Hennie Eva, a first grandchild for Stan and Ruth Durose. Congratulations to Rev Harry and Lyn Jones on their Emerald (55th) Wedding Anniversary on 20th June.

We welcome Ann Howard to Ashbourne Methodist with a transfer of membership from Brailsford Methodist. June Shaw has moved into Ashbourne, and Gwenda Alcock and Betty Douce hope to be moving home at the end of June.

Our thanks go to John Hurfurt who has chaired the Resources Team for the last seven years and to Rosemary Webb for her role as Communion Steward for a number of years.

Our young people are still busy with school exams into the month of June and value prayer. Remember Jonathan and Isabel Hill, our mission partners in Zimbabwe and Stephen and Suzanne in the UK, with Jonathan and Isabel hoping to visit UK this year for graduations and family reunion.

Don't forget the prayer time in the vestry on a Thursday at 9.30am for an hour, but just drop in for a shorter time if that suits you. After worship on a Sunday, there are people available to pray with you or for you.

Elizabeth Spencer is part of the Chaplaincy team at the Royal Derby Hospital as a Chaplaincy Visitor and if you are in hospital and need a visit, you or a friend could let her know on 348482. Elizabeth is also a visitor at St Oswald's Hospital in Ashbourne.

*Joyce Odell, Pastoral Secretary 15.05.2019*



PENTECOST

The work of God is not by might of man, or by the power of men, but by His Spirit. It is by Him the truth convicts and converts, sanctifies and saves. The philosophies of men fail, but the Word of God in the demonstration of the Spirit prevails. Our wants are many and our faults innumerable, but they are all comprehended in our lack of the Holy Ghost. We need nothing but the fire.

The resources of the Church are in “the supply of the Spirit”. The Spirit is more than merely the minister of consolation, the “Comforter”. He is Christ without the limitations of the flesh and the material world. He can reveal what Christ could not speak. He has resources of power greater than those Christ could use and He makes possible greater works than His.

He is the Spirit of God, the Spirit of Truth, the Spirit of Witness, the Spirit of Conviction, the Spirit of Power, the Spirit of Holiness, the Spirit of Life, the Spirit of Adoption, the Spirit of Help, the Spirit of Liberty, the Spirit of Wisdom, the Spirit of Revelation, the Spirit of Promise, the Spirit of Love, the Spirit of Meekness, the Spirit of Sound Mind, the Spirit of Grace, the Spirit of Glory and the Spirit of Prophecy.

It is for the Church to explore the resources of the Spirit. The resources of the world are futile. The resources of the Church within herself are inadequate. In the fullness of the Spirit there is abundance of wisdom, resources and power; but a human-managed, world-annexing, priest-pretending Church can never save the world or fulfil the mission of Christ.

Suppose we try Pentecost!

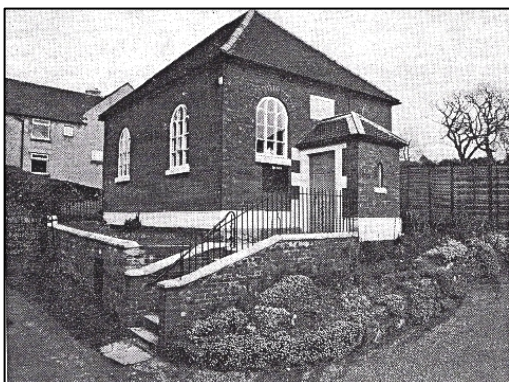
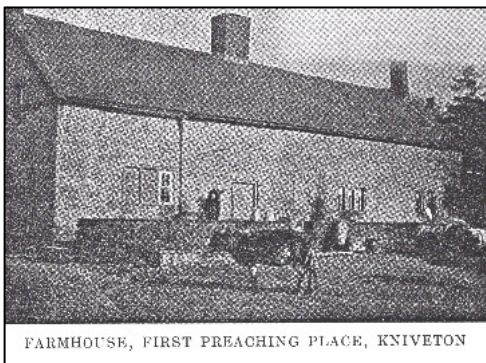
*From: 'The Way to Pentecost', by Samuel Chadwick  
(former Principal, Cliff College), published CLC 1932  
Contributed by Brian Hawkins*

## Kniveton Methodist Chapel – how it began

Prior to 1817 the Anglican Parish Church was the only Christian congregation in Kniveton, but then Methodism, founded by the Rev John Wesley, was introduced into the village by Messrs W Ride and L Mather. There were two groups in Methodism: 'Primitives' and 'Wesleyans'. It was the Primitives (or Prims) who met in the village. There was no building at that time, and friends opened their houses for the meetings, two of whom were Mr J Smith and Mr W. Bagshaw. In spite of opposition, the number of friends and supporters grew rapidly. Services continued to be held in local houses. One family offering support was the Bott family, and their farmhouse was regularly used.

The Bott family were among the greatest supporters, and Enid Stubbs (nee Bott) and her brother David continue to maintain strong contact with the chapel.

Before long it became apparent that there was a need for a dedicated chapel building, and the friends overcame formidable difficulties to achieve this end, but not until 1832. Apparently it cost £160 to build! Seeing what the Primitives had achieved, the Wesleyans were roused to do similar, and they began to build themselves a chapel a short distance away. But they struggled and were forced to give up. In 1843 they offered it up for sale and the Prims bought it and made it into a school room, which flourished. In 1845 it was deemed appropriate to make Kniveton the main chapel in the Circuit, though it is now part of the Ashbourne Circuit.



*Kniveton Methodist Chapel in 1982, when its 150th Anniversary was celebrated.*

Although our congregation is now small, we continue to meet regularly on the second and fourth Sundays in the month, and offer a warm welcome to friends and members, especially at our special services such as those we hold to mark, for example, harvest and Christmas, when we are delighted to welcome the children, staff and parents from the school. We have many friends from the circuit who take the services on a rota basis, as well as our Circuit Superintendent, Rev Tim Morris. We continue to celebrate, and give thanks for, the achievements of past congregations at our annual Anniversary Services in June.

*Betty Hadley, with information from an article  
in the Primitive Methodist Magazine, 1856*

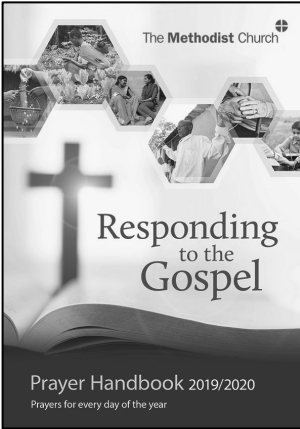
## **Ashbourne Show– Saturday 17th August**



Every year, the Circuit has a tent at the Ashbourne Show. This is part of our outreach and witness to the community. This year it will be on Saturday 17 August.

Would you be able to help serve tea and coffee, or just to chat with people? Also, lots of help will be needed to set up, assist during the day and dismantle the stall after the show, at the end of the day.

*If you are able to help in any way, please contact Carole Thorpe on [cethorpe@hotmail.com](mailto:cethorpe@hotmail.com) or 346535*



## **Methodist Prayer Handbook 2019-20**

An order for copies of the Methodist Prayer Handbook will soon be sent off.

This resource will help you with your prayer life and the cost is about £3.50.

*If you would like a copy,  
please contact Carole Thorpe on 346535,  
[cethorpe@hotmail.com](mailto:cethorpe@hotmail.com) or at  
12 Cavendish Drive, Ashbourne DE6 1SR.*

## **Methodist Diary 2020**

This is an excellent, high quality hardback diary which, as well as enabling day-to-day and forward planning, is packed with useful general and Methodist information for the year.

*Contents include:*

2019-2022 Calendars: 1 year to view

September-December 2019 Diary: two weeks per view

JANUARY TO DECEMBER 2020 DIARY: ONE WEEK PER VIEW

January-June 2021 Diary: two weeks per view

Notes pages for July-December 2021: two months per view

Church Calendar 2020; Lectionary readings for 2020

Methodist and related organisations: useful addresses

Information for preachers; Map of Methodist Districts

Pages for notes

UK Maps, World Maps, National Rail Map, London Underground Map

Ribbon marker. There are 3 colour options, and two editions:

Standard edition: cost about £8

Interleaved edition, including an extra blank page between each week for notes: cost about £12.

*If you would like to order a copy  
please contact Carole Thorpe on 346535, [cethorpe@hotmail.com](mailto:cethorpe@hotmail.com)  
or at 12 Cavendish Drive, Ashbourne, DE6 1SR.*





## Annual Church Meeting

This year's Annual Church Meeting will be held on Thursday 27th June at 7.30pm. This is an opportunity for everyone to hear about the activities of the church and progress with the Link project and Plan for Growth, also to ask questions about any aspect of church life.

At this meeting, church office holders are elected for the year beginning September 2019. Do speak to Rev Tim Morris or Robert Sales if you feel you could fill a vacancy.

Everyone is welcome at the meeting, but only church members are entitled to vote.

Please come!

---

### **Relationships – Understanding each other's contradictory convictions**

The Methodist Church is on a journey of discerning together what the future holds for all of us in a changing world of relationships and marriage. Why not come along to these talks to learn more?

- **June 18th 7.30pm at Gedling Road Methodist Church, NG4 3EX**  
Rev'd Moses Agyam 'How do we read the Bible today as part of an inclusive community. What difficulties do we encounter?'
- **July 11th 7.30pm at Nuthall Methodist Church, NG16 1DN**  
David Hull, chair of MET (Methodist Evangelicals Together) will share a conservative, evangelical position.
- **July 16th 7.30pm at Langans, Burton on Trent, DE14 1DP**  
Eunice Atwood, ex-Vice-President of Conference and tutor at Queens College Birmingham. Eunice will share from the perspective of the Wesley quadrilateral.

Contact Carole Thorpe [cethorpe@hotmail.com](mailto:cethorpe@hotmail.com) or 346535 for details of these meetings. Further information on this subject can be found at: <https://www.methodist.org.uk/about-us/the-methodist-church/marriage-and-relationships-2019/>

## **INSPIRATIONAL INTERGENERATIONAL IDEAS**

from Lizzie Hackney and Mark Hackney,  
Intergenerational Missioners  
in the Hereford Diocese  
Saturday 6th July at 10.00am  
in the Century Hall



Our new 'Plan for Growth' states that we are an 'inclusive, intergenerational church' and, while knowing that we can always do better, we like to think we are quite good at being inclusive and intergenerational. But what exactly do we mean by an 'intergenerational church' and what more can we all do to improve in this area?

Lizzie Hackney is an expert on the subject, and an inspirational speaker. It is hoped that many will come to her workshop, not just those who work with young people, older people or any other group.

All will be welcome. Please put the date in your diary.

## **Open the Book Training Day**

There is to be a training day for storytellers in the Century Hall on Wednesday 10th July.

This is for existing storytellers and also for those who might be considering becoming a storyteller. There is still a need for more.

Lunch of soup and fruit will be served.

As there will only be a short break for lunch, it would be helpful if others were willing to help prepare and serve lunch.

Are you interested in attending?

Would you be willing to help at lunchtime with heating up soup, washing fruit and serving?

*Please contact Margaret Heaton on 343418*





## Operation Mobilisation

On Sunday 23rd June, in the Century Hall after the morning service, there will be a mission book table.

Ray Amey, who is part of Operation Mobilisation, is coming along with books and CD's for us to browse during coffee time. Many of the publications are free or by donation only and others have subsidised prices.

Ray has visited us before and shared in our service, JMA and Mustard. He is looking forward to his return visit.

## JMA bring and share lunch

Sunday 23rd June  
12.00-2.00pm in the Cornerstone.

We are looking forward to fun and learning together, with a focus on Venezuela.

Members and friends are very welcome.  
Further details from Ruth Mallard 348342 [ruth@mallards.me.uk](mailto:ruth@mallards.me.uk)



## Englesea Brook Chapel & Museum

The Tuesday morning housegroup are planning an outing to Englesea Brook Chapel and Museum on Friday 2nd August.

The idea is to leave Ashbourne at around 9.30 am, arriving at Englesea at approx 10.30am. There is a small café where coffee/tea, scones, teacakes and small cakes are available.

We shall then have a guided tour round the Chapel and Museum (probably with Sue and David Leese as our guides).

It is suggested that we take a packed lunch. If it is a nice day, we can sit out on the patio. We wondered if anyone else would like to join us. We are hoping to go in cars. We are not sure if we shall have spare seats, but there may be people who would like to go who are willing to drive.

*Alma Swan*

## Mission Matters : June 2019



**PHAKAMISA**  
A Ministry of the Pinetown  
Methodist Church



*Uplifting and empowering people from impoverished communities*

### **“Sawubona” (hello in Zulu!)**

Phakamisa is a mission project in South Africa that has been supported by Ashbourne Methodist Church for a number of years now. Anne Wills is the main contact person and she last wrote on it in Connections in 2012. The Director, Mrs Thokozani Poswa, visited us at Cornerstone on Saturday 11th May which was a delightful time with lots of folk popping in to see her.

JMA has also supported Phakamisa and it is featured heavily in its latest Rainbow magazine. see:

<https://www.methodist.org.uk/media/11189/rainbow-easter2019.pdf>

### **Here are a few excerpts:**

What does your school look like? Is it big or small? Does it have one or two floors? In South Africa, some schools are small huts with no electricity, computers or running water. A lot of children in South Africa can't go to school at all; maybe because the school is too far away, their family is too poor, or they don't have parents to take care of them.

**Wandering teachers:** But in a place called Pinetown in South Africa, if the children can't get to school, the teachers go to them! Phakamisa is a project run by the Pinetown Methodist Church to help children under six years old get ready for primary school. 'Phakamisa' is pronounced 'pa-gah-mee-sa'. It's a Zulu word meaning 'to lift up'. Thandi and Nomalanga are 'wandering teachers'. They help children with reading, writing and maths. They also take bread, milk and apples for children to eat at break-time.

**Meals and more:** Thandi says: “We provide education and meals for the children. Sometimes, when we check with children on what they ate at home, we find out that they didn't have any food at all. Some children come with torn or very old clothes, so our school gives them clothes if we have some that have been donated. Phakamisa gives hope for a better future to children who don't have much.”

**Meet Rachael:** Rachael (14) from Ireland visited the Phakamisa project in South Africa “I went to Phakamisa to learn about how churches help people in their communities. We went to help out in a vegetable garden that Phakamisa has helped to set up. We helped the ladies water the plants, which was hard work. After helping in the garden, we went to their house. After eating maize meal and home-grown vegetables, we had fun dancing and singing with the ladies and the children!”

As always, we need to pray for our mission partners (see Mission matters for Prayer leaflet in church vestibule and some circuit chapels).

Thokozani told me they are still struggling with finances and may have to lay off some more staff.

*Richard Odell, World Mission Secretary*

### **Easter Offerings**

A Big Thank You to all the Circuit for your support and generous giving for Easter Offerings. The magnificent sum of £1,218 has been forwarded to the Methodist Fund for World Mission. Some of this was gift aided so in due course when the tax back is received a further sum will be added.



Thank you all very much!

### **Dates for your diary:**

#### **Strawberry Tea – 1st June 2019**

We are holding a Strawberry Tea in aid of The Link Project on Saturday 1st June. This will be held at Sandra and Cliff's at The Old House, Bankend Farm, Roston, from 2.00 pm to 4.30 pm. We do hope you will join us for tea and scones/cakes etc. All welcome!

#### **District Summer special event - Wed 10th July**

At Home with Gill and Sue  
at Gill Stamps – 11.00am – 3.00pm

#### **Circuit AGM and Supper Evening at Brailsford - Mon 15th July**

Speaker – David Bale on Mambabu

*Alma Swan*

## REFLECTIONS

Looking back, the early part of 2019 has been odd to say the least. Working outside in February, and usually wrapped up in multiple layers against the cold rain and wind, but actually this year in the minimum as possible, and wondering if one would get a suntan instead of frostbite, while working on a drain on our land.

The first Swallow of the season arrived at the farm, alone, and, believe it or not, did not move on as the first ones usually do, but stayed around the farm for two weeks or more, awaiting the rest of its "pals".

I am sure it checked out every nest that was available in the sheds and under the eaves of the farmhouse, finding out which was the best, and making a claim before the rest of the flock came.

We saw "Mad March Hares" going through their routine, and chasing each other all over the fields, but again, it wasn't March, but February! Also, this year we have seen more than the usual two or three, but about a dozen at one time, we are pleased, as we love to see them.

There was a downside to this unusual weather, in that it was so hot and dry the trees did not sprout leaves, or the grass grow, as it usually does at this time, till about a few weeks ago, when we had rain continually on one Saturday, then "boom", the tree foliage was abundant and the grass grew again and continues to grow.

The unusual weather was the subject of the news and, of course the weather folk, but for all their words of what it was "supposed to do", I always remember someone said to me, "That's all very well and good, but what you have remember is, the weather cannot read, or do what it's told, only God controls the weather!"

To which I say, "Thank God", for I would not want it in the hands of mankind, for look at mankind's track record! Dare I say "B\*\*\*\*T" as an example! Who would you chose? I know who I would! God Bless.

*Tom Parkinson*

## Shoe Boxes

We are doing Shoe Boxes again this year, and have already started fund raising and getting things ready. We would be grateful for any empty shoe boxes, or if anyone feels like doing us some knitting please see one of the Team. Wool can be provided. It is good to share our love with children who have nothing.

*Margaret Heaton, Brenda Micklethwaite, Diane Warburton, Sheila Cook*



**Susanna  
Wesley**  
**1669 350 2019**  
ANNIVERSARY

---

2019 marks the 350th anniversary of the birth of Susanna Wesley “the Mother of Methodism”. Although most known for her influence on her sons John and Charles, Susanna deserves recognition in her own right as an accomplished writer, teacher and theologian.

### **A Susanna Wesley Pilgrimage**

On Sunday 20th January 2019, the exact date of the 350th anniversary of the birth of Susanna Wesley, a pilgrimage took place in London from Susanna’s birthplace in Spitalfields to her grave in Bunhill Fields. The 55 pilgrims were led by Jill Baker, Past Vice-President of the Methodist Conference, in collaboration with Wesley’s Chapel.

Jill described pilgrimage as “an intentional journey in response to the stirrings of the Spirit”, and each stage of this pilgrimage came with its own reflections, prayers and readings.

The first stage, as they moved from Wesley’s Chapel to the site of the Foundery, where Susanna died, had the theme 'Departure'.

The second stage then had the theme 'The Pilgrim Path' during which they reflected on:

'Community' (the Foundery to Spitalfields, the area where Susanna was born),  
'Walking with Courage' (Spitalfields Square to Spital Yard, the actual house where Susanna was born) and  
'A Liminal Experience' (Spital Yard to Finsbury Square).

Taking the theme 'The Sacred Centre' they journeyed from Finsbury Square to Bunhill Fields and Susanna’s graveside, and then, with the theme 'Return Transformed', they went back to Wesley’s Chapel for the end of the pilgrimage.



## **A prayer for the 350th anniversary of the birth of Susanna Wesley**

Living, loving God, Trinity in unity,  
we praise and thank you for the life of Susanna Wesley,  
mother of Methodism.  
Inspired by her regime of private prayer and meditation,  
may we grow in our devotion to you.  
Following our conscience as she did,  
may we think for ourselves and dare to act on kingdom values.  
Aware of her programme of teaching her children,  
girls and boys alike,  
may we value and nurture all in our care,  
sensitive to individual needs.  
Encouraged by her determination to build up  
the faith of her family and the parish of Epworth,  
may we lead others to follow Christ more closely.  
Discerning the Holy Spirit moving powerfully  
in the life of the nation as she did,  
may we be open to new challenges and expect great things from you.  
We ask this in the name of Jesus Christ and in the power of the Spirit.  
Amen.

*Written by Jenny Carpenter*

## **Summer Circuit Event**

Last year we had a very successful Circuit Weekend away. There is no weekend away this year, but there will be an afternoon/evening event for us to meet together on Sunday 14th July at the Brailsford Institute.

Let us join together for fellowship and food, followed by worshipping together as a Circuit.

There will be activities which we hope will enable people to talk together, but there is no obligation to join in with these. Just come to talk together or just for the Barbeque. The Institute will be open from 2.30pm.

The Barbeque will be from 4.30pm. We shall need to collect numbers of people coming to this for catering purposes. Details of how to do this will be circulated to all the chapels.

Worship will be at 6.00pm.

Please come along to make this a great afternoon of fellowship.

*The Circuit Leadership Team*





## **MHA Sunday**

On Sunday 7th July, the 10:30am service at Ashbourne will be conducted by Rev Dr Chris Swift, Director of Chaplaincy and Spirituality at MHA.

The following article about the work of MHA has been written by Mark Lewis, who used to be part of our church, and now works for MHA.

### **Music therapy**

Music is an intrinsic part of our lives. Music can make you happy or sad, it can entertain, excite and inspire. Dementia is a broad category of brain disease that causes a long term and often gradual decrease in ability to think and remember. This can affect a person's daily functioning. Dementia can affect memory, speech, language, emotions and motivation. It can lead to depression, confusion and a loss of interest in social situations.

Music therapy is used at MHA to help residents living with dementia in its specialist care homes. Music activates neurons in more regions of the brain than anything else that scientists are aware of. Research shows that, despite the deterioration of cognitive functions, people with dementia retain the ability to appreciate and make music until a late stage in the condition.

### **MHA values**

MHA has had Christian values central to its care for the last 75 years as it looks after the most vulnerable elderly people in society. In 2008 MHA employed their first music therapist, and in 2010 this was developed further across more dementia care homes. Within five years the music therapy team were winning awards for 'Excellence in Dementia Care' in recognition of their specialised therapeutic care, dedication and research.

### **'Live at Home' schemes**

In 1998 MHA started a befriending project in Lichfield. This has grown into a network of over 60 'Live at Home' schemes impacting nationally on the lives of over 10,500 people. These allow people to live in their own homes but still retain connections and networks with others. The schemes help alleviate loneliness among members and help forge new friendships, helping lower levels of depression and boosting physical and cognitive function.

## Supporting MHA

Music therapy and Live at Home schemes are just two examples of MHA's valuable work supported by the giving of individuals and churches.

A gift of £500 from a church would fund transport to a Live at Home activity for 16 people for a month. A gift of £360 would pay for a 12-week course of music therapy sessions easing an individual's anxiety and improving their overall feeling of well-being.

£170 could pay for a set of handheld instruments, providing the opportunity for people with dementia to experiment with different sounds, maintain their co-ordination skills and feel included and valued.

An individual gift of £30 could pay for an individual music therapy session, giving someone with dementia the opportunity to express their feelings. A gift of £20 could pay for a day trip, helping someone to get out of the house for the day and enjoy time with friends. £45 could pay for a group music therapy session, allowing people to interact and enjoy a shared experience.

Please donate to MHA to help all its residents and users of its services know that they are valued as individuals.

*Mark Lewis*  
*Faith Communities Manager MHA*

### **Ashbourne and District 50+ Forum**

#### **Open meeting for everyone**

Friday 5th July – 10.00am to 12.30pm  
at the Elim Church, Waterside Park

Guest speakers:

Councillor Simon Spencer, Jeffrey Philips, Albert Golding

The aim of the Ashbourne and District 50+ Forum is to give a platform to local issues, in order to help influence policy makers and engage with agencies and organisations who provide services primarily for the 50+ community, but also benefit the wider community.

Contact: John Dick [jadix40@gmail.com](mailto:jadix40@gmail.com) 01335 370200



Date	Event	Contact
Thu 30 May 4pm	Royal School of Church Music Choral Music Service for Ascension Day at St Oswald's church	Claire Critchlow 343052
Sun 2 June 3pm	Thanksgiving Service for all volunteers and supporters of Tissington Well Dressing event, by the green in front of St Mary's church, Tissington	Carolyn McDonald 664132
Tues 4 June 9am-3pm	Major Incident emergency planning exercise. Is anyone interested in becoming an emergency chaplain?	Duncan Ballard 343825
Wed 5 June Midday	ACT Monthly Prayer Meeting: Prayer Walk starting at St Oswald's church, sharing a bring and share lunch on return to the church at 1.15pm	Di Lambert 661238
Thu 13 June 1.00-2.30pm	The Empathy Hub: a social support group for parents of children with Special Educational Needs and/or Disabilities. Elim church, Waterside centre	Di Lambert 661238
Mon 17 June 11am- 2pm	Ashbourne Community Brunch: an informal networking opportunity for professionals to come together, share initiatives and updates on new developments in the community of Ashbourne. St Oswald's church centre	Duncan Ballard 343825
Wed 19 June 11.30am	Old Airfield Group: meet at St Oswald's church car park, to drive to the old airfield and prayer walk, praying for the new housing development	Amanda Marshall 07557 567751
Sat 22 June 10am-Noon	Teddy Bear Parachuting: excited teddies are lifted on to the church roof, wearing a real parachute, and then making their courageous jump off the roof. Teddy bear first-aiders on hand.	Claire Critchlow 343052
Tues 25 June 7.30pm	Music and Silence: Four-part harmony singing in the Taize style. St Oswald's church. AshbourneFestival.org	Felicity Morgan 301147



*This is the confidence we have in approaching God:  
that if we ask anything according to his will, he hears us.  
1 John 5:14*

After a period without ACT monthly prayer meetings, these have now recommenced. We want to encourage as many people as possible to come along in future. Here is the programme for the current year, which we were given at the well-attended first meeting:

The June meeting will be a Prayer Walk. This is on Wednesday 5th June at 12 noon, starting at St Oswald's church. There will be a bring and share lunch on return to the church at 1.15pm.

All further dates are at venues in and around Ashbourne as follows:

- Thursday 4th July at 7.00pm – All Saints' church
- Wednesday 7th August at 12 noon – Ashbourne Methodist church
- Thursday 5th September at 7.00 pm – Tissington Chapel
- Wednesday 2 October at 12 noon – The Empire Club, followed by a soup and roll lunch

We look forward to joining together in prayer for 2019, seeking God's will for Ashbourne and the surrounding villages.

*Brian Hawkins*

## **From the Editors**

We are grateful to all who have sent items for this magazine.

We would welcome contributions for the next edition, including photos of church activities – **July/August 2019**

Please note we are unable to include items which are copyright, unless permission is obtained from the copyright-holder.

Last date for contributions: **Wednesday 26th June**

Publication date: **Sunday 1st July**

**NB: The following edition will be published on 25th August**

If possible, please e-mail us at [dysters@tiscali.co.uk](mailto:dysters@tiscali.co.uk)

If this is not convenient, please contact us on 01335 344086

*Daphne and John Dyster*

## Ashbourne Circuit Church Services

### Sunday June 2nd

Ashbourne	10:30	Fiona Green	Colossians 1:24 - 2:15 in Century Hall, Communion United Service at Methodist, Colossians 1:1-23 United Service
	18:30	Praise – Rev Tim Morris	
Brailsford	10:30	John Dyster	
Parwich	<b>9.30</b>	C of E	

### Sunday June 9th

Ashbourne	9:15	Café style	<b>Pentecost</b> in Century Hall All Age
	10:30	Rev Tim Morris	
	18:30	Lorraine Hawkins	
Brailsford	10:30	Fiona Green	Colossians 1:24 - 2:15 Communion
Kniveton	14.30	Rev Tim Morris	

### Sunday June 16th

Ashbourne	10:30	Diana Whitmill	Colossians 2:16 – 3:17 in Century Hall
	18:30	Praise – Robert Sales	
Brailsford	10:30	Sue Leese	All Age
Parwich	10:00	Peter Dawson	United Service
Tissington	10:30	Rev Tim Morris	Communion

### Sunday June 23rd

Ashbourne	10:30	Rev Mark Broadhurst	Communion, Colossians 3:18 – 4:18
	18:30	Rev Tim Morris	
Brailsford	10:30	Diana Whitmill	Colossians 2:16 – 3:17
Kirk Ireton	18:30	Steve Haines	
Kniveton	11:00	Ruth Barratt	

### Sunday June 30th

Ashbourne	10:30	Powersource	All Age, Church Anniversary Communion
	18:30	Rev David Leese	
Brailsford	10:30	Rev Mark Broadhurst	Colossians 3:18 – 4:18

### Sunday July 7th

Ashbourne	10:30	Rev Dr Chris Swift	MHA in Century Hall
	18:30	Praise – Rev Chris Briggs	
Brailsford	10:30	Rev Tim Morris	United Service at Methodist, Communion
Parwich	14:30	Robert Sales	United Service, Church Anniversary

The details in **Bold** are changes to the usual plan.

## Dates for your diary and your prayers

### June

### Bible Month - Colossians

Sat 1st	14.00	Strawberry Tea at Cliff and Sandra's in Roston
Wed 5th	12.00	ACT Prayer Walk starting at St Oswald's church
Wed 5th	19:00	Milldale Summer Service – Rev David Leese
Sat 8th	13:00	District Event “Being Real” at Mansfield
Sat 8th	19:00	Rhythm of Life concert at Ashbourne Church
Tue 18th	19:00	Pastoral talk by Paul Waters – signs of dementia – in the Century Hall
Tue 18th	19:30	Relationship talk – Gedling Road Methodist Church
Sun 23rd	11.30	Operation Mobilisation book table
Sun 23rd	12.00	JMA Bring and share lunch
Thu 27th	19:30	Ashbourne Annual Church Meeting

### July

Wed 3rd	19:00	Milldale Summer Service – Rev Tim Morris/Fiona Green
Thu 4th	19.00	ACT Prayer Meeting at All Saints' church
Sat 6th	10:00	Inspirational Intergenerational Ideas with Lizzie Hackney in the Century Hall
Wed 10th		MWiB District Day at Codnor
Wed 10th		Open the Book Training Day
Thu 11th	19:30	Relationship talk – Nuthall Methodist Church
Sun 14th	14:30	Circuit Fellowship Event at Brailsford Institute with barbeque and worship
Mon 15th	19:00	MWiB AGM and supper at Brailsford
Tue 16th	19:30	Relationship talk – Langans, Burton on Trent

### August

Fri 2nd	9.30	Outing to Engelsea Brook Chapel & Museum
Wed 7th	12.00	ACT Prayer Meeting at Ashbourne Methodist
Wed 7th	19:00	Milldale Summer Service – Lorraine Hawkins
Sat 17th	9:00	Ashbourne Show

### September

Sat 21st	10:00	District Synod at Riverside Church
----------	-------	------------------------------------

**Circuit website: [www.ashbournemethodist.org.uk](http://www.ashbournemethodist.org.uk)**

### **Ashbourne Church Activities**

Sun	18.30pm	Mustard (Youth Fellowship)
Mon	10.00am	Housegroup: weekly <i>Contact – Gareth Rutledge (418519)</i>
	14.00pm	Craft and Chat in The Cornerstone <i>Contact – Clare Sales (342321)</i>
	19.30pm	Housegroup: weekly <i>Contact – Helen Walker (343910)</i>
Tues	9.00am	kids@cornerstone <i>Contact – Clare Sales (342321)</i>
	10.00am	Housegroup: weekly <i>Contact – Alma Swan (343751)</i>
	12.30pm	Luncheon Club: last Tuesday in month. Century Hall <i>Contact – John &amp; Elizabeth Hurfurt (342859)</i>
	13.00pm	kids@cornerstone (not 3rd Tuesday of the month) <i>Contact – Clare Sales (342321)</i>
Wed	9.30am	Walk and Talk Group: weekly <i>Contacts – Chris and John Dakin (345280)</i>
	19.30pm	Housegroup: fortnightly <i>Contact – Eric and Jenny Williams (346155)</i>
Thu	9.30am	Prayer Meeting: weekly <i>Contact – Brian Hawkins (310353)</i>
	19.30pm	Housegroup: weekly <i>Contact – Jeff Ffoulkes(300443)</i>
Fri	19.30pm	Housegroup: fortnightly <i>Contact: Nick Flux (07764988479)</i>
Thu, Fri, Sat	10.00am	The Cornerstone Coffee Shop <i>Contact – Pat Fielding (345695)</i>

### **Brailsford Church Activities**

Tues	9.30am	Coffee Shop: weekly
Wed	12.30pm	Luncheon Club: monthly (2nd Wednesday)

### **Hulland Church Activities**

Wed	19.30pm	Bible Study: monthly (1st Wednesday) <i>Contact – John Dyster (344086)</i>
Thurs	14.15pm	Women's Fellowship (1st Thursday)

### **Tissington Church Activities**

Fellowship Group  
*Contact – Richard Odell (419319)*



# Rhythm of Life

**A Concert for a Summer Evening  
featuring Chameleon Choir,  
'A Little Light Music' Sax Quartet  
Organist Greg Barker**



**7pm on Saturday 8th June  
Ashbourne Methodist Church**

**Tickets £8 (£1 for under 16s)**

~ Refreshments served during the interval ~

~ All proceeds to "The Link Development", Church & Community Hub ~

To book a ticket call 01335 360308, email [info@chameleonchoral.co.uk](mailto:info@chameleonchoral.co.uk)  
or see our website [www.ashbournemethodist.org.uk/events](http://www.ashbournemethodist.org.uk/events)